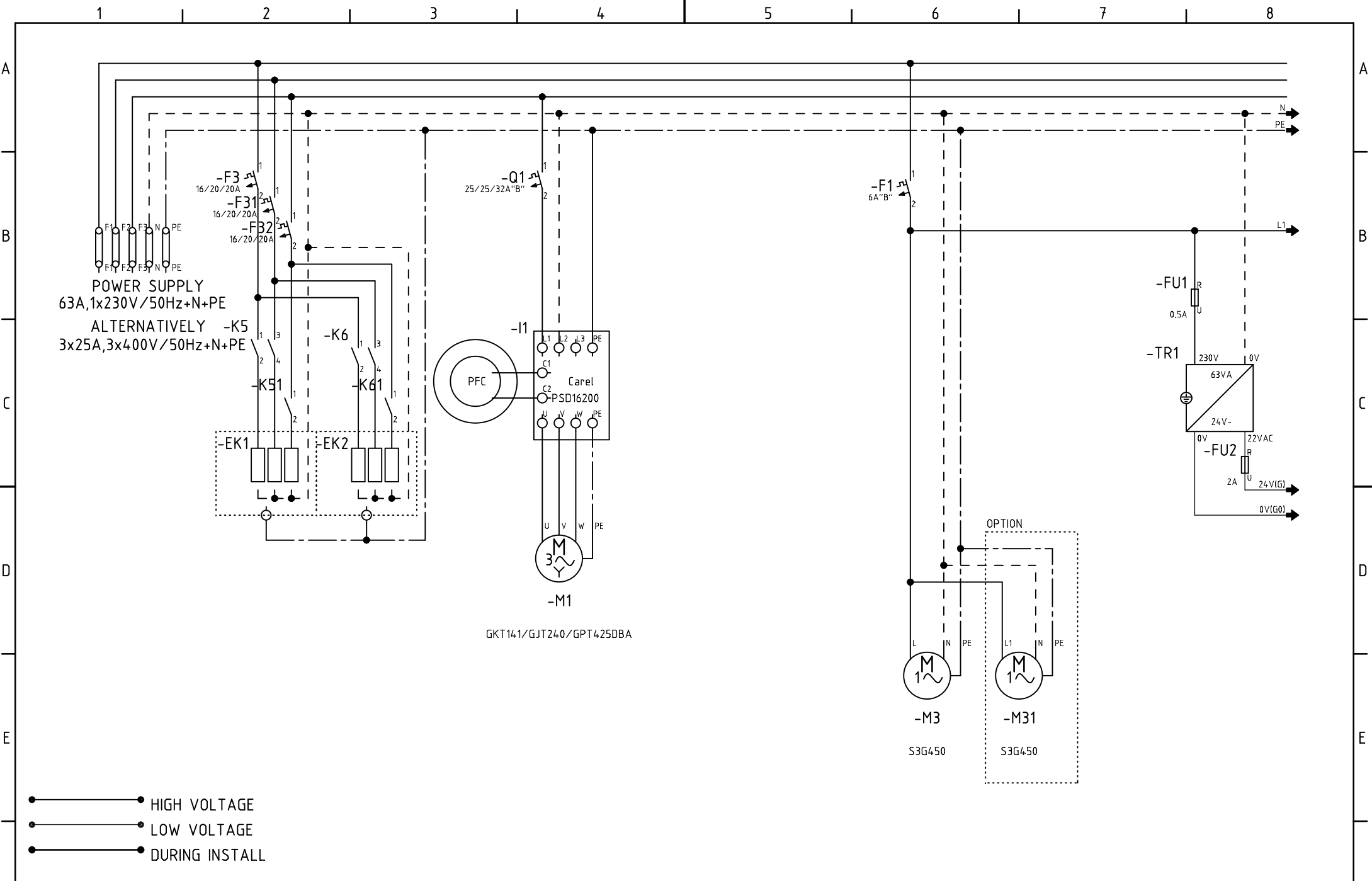


Electrical Wiring Diagram

| Typ | 4601 BOXAIR BA22/30/45I | Serial No. | Technik Elektro: | Checked | Date: | Serial |
|---------------------|-----------------------------------|------------|---------------------|----------|-----------------|--------|
| | | | | | Checked by: | |
| Marking | Function | Code | Size | Producer | Standard/Option | Serial |
| -CO1 | reversing valve | | 230V | Wilspec | Yes | |
| -I1 | DC inverter drive | PSD16200 | 1x230V | Carel/It | Yes | |
| -pCO5 | controller | PCO5 | | Carel/It | Yes | |
| -PGD1 | semigraphical display | PGD1 | | Carel/It | Yes | |
| -pAD1..pAD11..pAD12 | room terminal | ADPC | | Carel/It | Option | |
| -EK1 | heater 4.5/6/6kW | | 3x230V | Baker/CZ | Yes | |
| -EK2 | heater 4.5/6/6kW | | 3x230V | Baker/CZ | Yes | |
| -ExV | EEV 18/18/24kW | | | Carel/It | Yes | |
| -EVO | EEV driver | EVDEvo | 24V | Carel/It | Yes | |
| -F1 | circuit breaker control | | 6A | Hager | Yes | |
| -F3, 31, 32 | circuit breaker heater | | 20A | Hager | Yes | |
| -FU1 | transformer fuse | | 1A | | Yes | |
| -FU2 | transformer fuse | | 2A | | Yes | |
| -K3 | compressor run relay | | 4xSPDT, 230V | Finder | Yes | |
| -K5 | heater contactor | | 3x400V/25A, 40 | AB | Yes | |
| -K51 | heater contactor | ER120 | 2x230V/20A, 20 | Hager | Yes | |
| -K6 | heater contactor | | 3x400V/25A, 40 | AB | Yes | |
| -K61 | heater contactor | ER120 | 2x230V/20A, 20 | Hager | Yes | |
| -K62 | heater safety thermostat relay | | 4xSPDT, 230V | Finder | Yes | |
| -M1 | compresor GKT141/GJT240/GPT425DBA | | 3x230V/BLDC | LG | Yes | |
| -M2 | pump | HUPA25-7 | 1x230V/50Hz | HALM | Yes | |
| -M3, M31 | condenser fan | | 1x230V/50Hz | EBM | Yes | |
| -M10 | SHW pump / 3 way valve | | 1x230V/1A | | No | |
| -M11 | pump heating circuit 1 | | 1x230V/1A | | No | |
| -M12 | pump heating circuit 2 | | 1x230V/1A | | No | |
| -M111 | mixing valve servo HC1 | | 24VAC/0-10VDC | | No | |
| -M121 | mixing valve servo HC2 | | 24VAC/0-10VDC | | No | |
| -TC1 | triac module | MCHRTF04C0 | 1x230V/4A | Carel/It | Yes | |
| -PB1 | SHW probe | | NTC10K | Carel/It | Yes | |
| -PB2 | heating water probe | | NTC10K | Carel/It | Yes | |
| -PB3 | outdoor probe | | NTC10K | Carel/It | Yes | |
| -PB4 | water probe HC1 | | NTC10K | Carel/It | Yes | |
| -PB5 | water probe HC2 | | NTC10K | Carel/It | Yes | |
| -PS1 | SGT probe | | NTC10K | Carel/It | Yes | |
| -PS2 | DGT probe | | NTC50K | Carel/It | Yes | |
| -PT1/LP | pressure transducer | | SPKT33R0 | Carel/It | Yes | |
| -PT2/HP | pressure transducer | | SPKT00B6R0 | Carel/It | Yes | |
| -Q1 | circuit breaker DC drive | | 1x230V/25/25/32A"B" | Hager | Yes | |
| -S3 | high pressure switch | | 42bar | Wilspec | Yes | |
| -S4 | flow switch | | 24VAC/1A | Sika | No/Yes/Yes | |
| -T2 | heater safety thermostat | | 70 °C | TG | Yes | |
| -TR1 | trasformer | | 230VAC/22VAC/63VA | | Yes | |
| -FB | fieldbus card | PCO100FD00 | | Carel/It | Yes | |
| -BMS | bms card | PCOS004850 | | Carel/It | Yes | |
| -ET1 | internet module | NeoBOX | | Neoware | Option | |
| F1, F1, F3, N, PE | terminals 5x6mm2 | | | | Yes | |
| L1..N..PE..1..96 | terminals 2.5mm2 | | | Wago | Yes | |

WARNING: ADDITIONAL GROUNDING OR EARTH LEAKAGE CIRCUIT BREAKER/INVERTER DRIVE TYPE (e.l.c.b., RCD) FOR WHOLE UNIT NECESSARY !!!



ATTENTION: THIS DOCUMENT CONTAINS PROPRIETARY DATA OF AUOCOTEC.

NO DISCLOSURE, REPRODUCTION OR USE OF ANY PART OF THIS DOCUMENT MAY BE MADE WITHOUT WRITTEN PERMISSION.

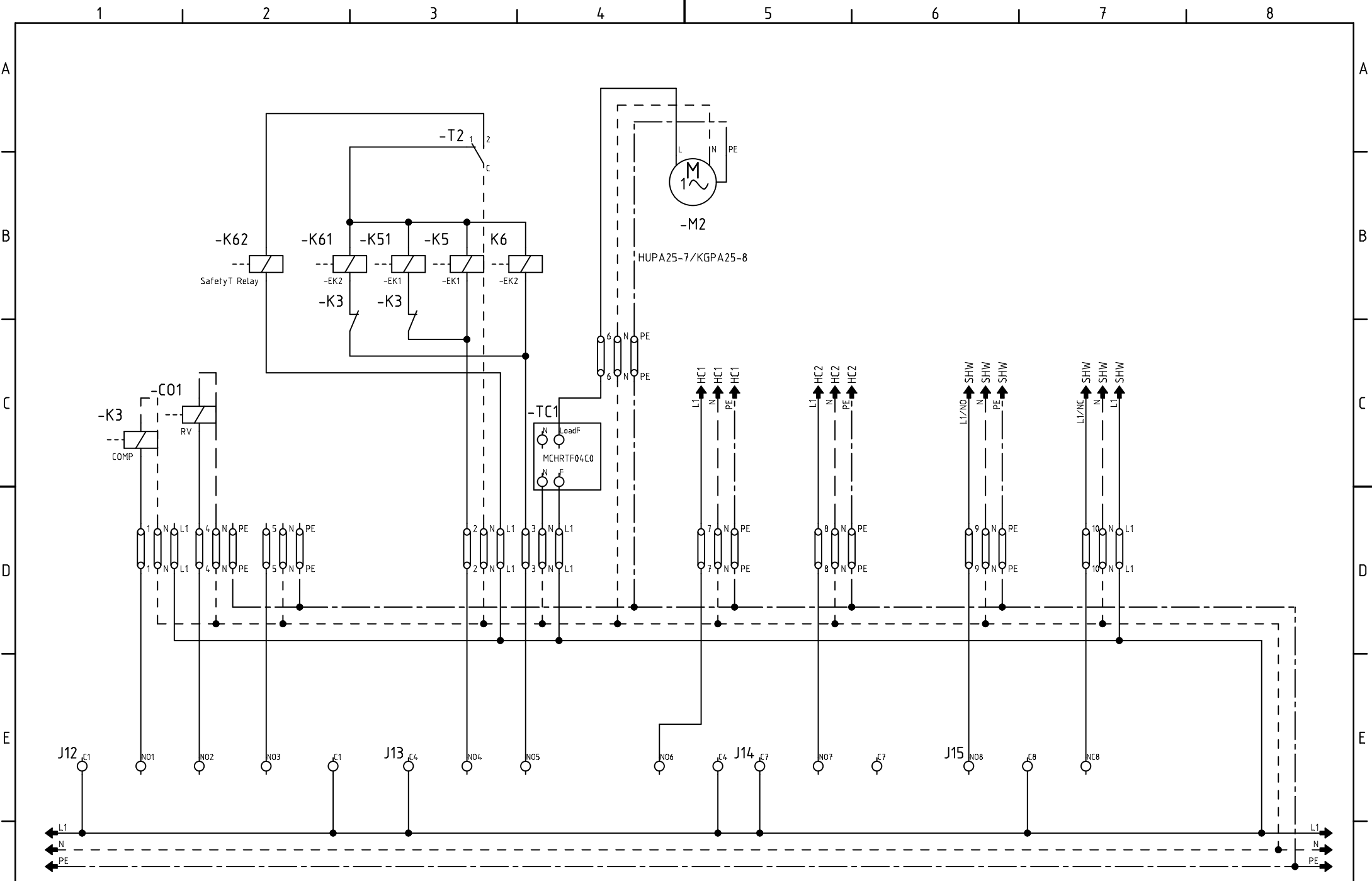
A4
Scale FULL

| | |
|---------------|--------------------|
| PRODUCT INDEX | |
| Drawn by | Ing. Jirka Jiranek |
| Date | 19.05.2012 |
| Checked | |
| Date | |

TITLE

BOXAIR BA22/30/451

| | | | |
|----------------------|--------|------------|------------|
| BOXAIR | | | |
| Project | BOXAIR | Print Date | 20.05.2012 |
| CUSTOMERS DRAWING No | | 4601 | - |
| Dwg No. | 4601/1 | Sheet | 1 of |
| | | Rev | 00 |



| | | |
|---------|------|------|
| ECN No. | Date | Name |
| | | |
| | | |
| | | |

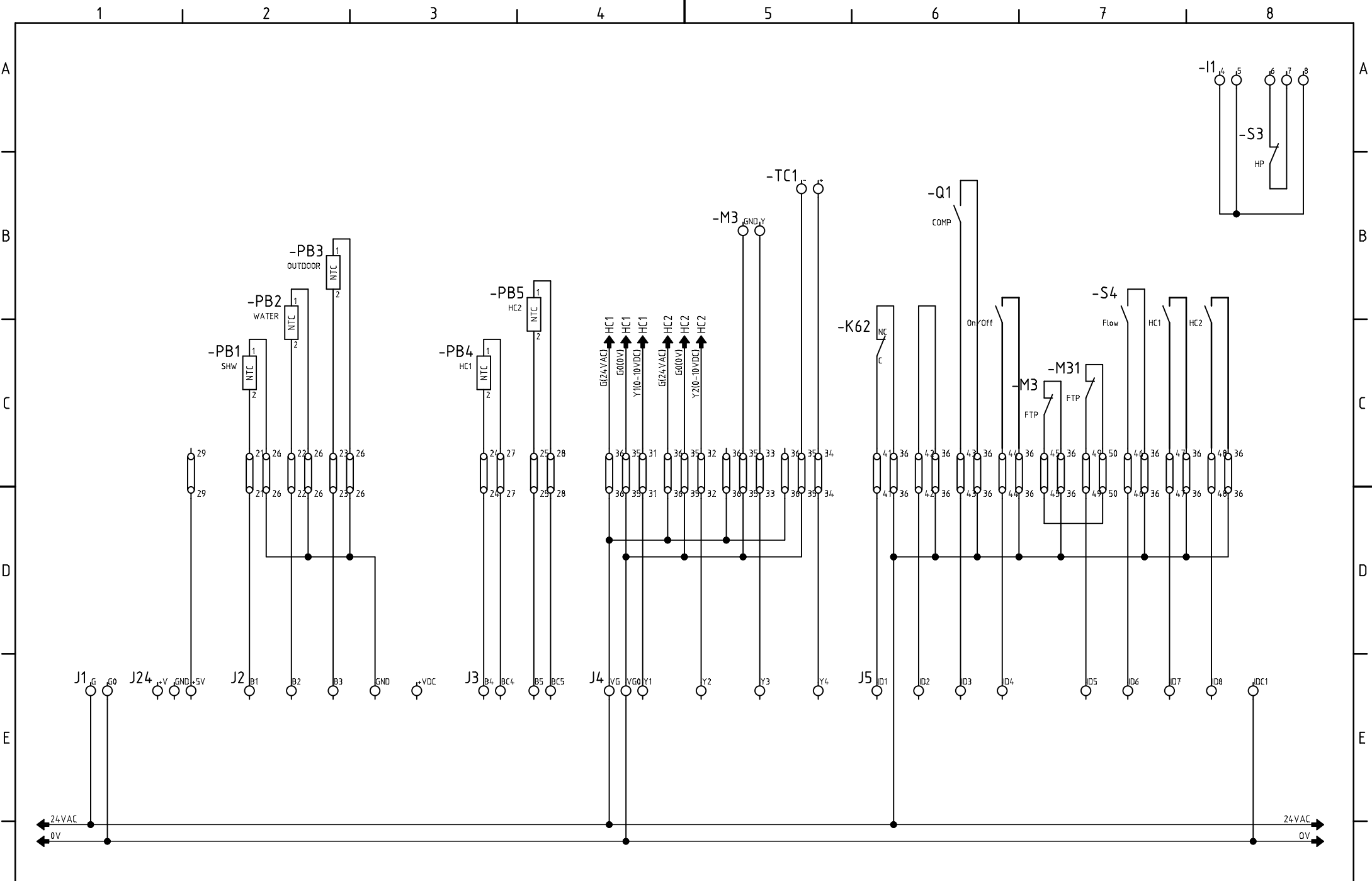
ATTENTION: THIS DOCUMENT CONTAINS PROPRIETARY DATA OF AUCOTEC.
 NO DISCLOSURE, REPRODUCTION OR USE OF ANY PART OF THIS DOCUMENT MAY BE MADE WITHOUT WRITTEN PERMISSION.

A3
 Scale FULL

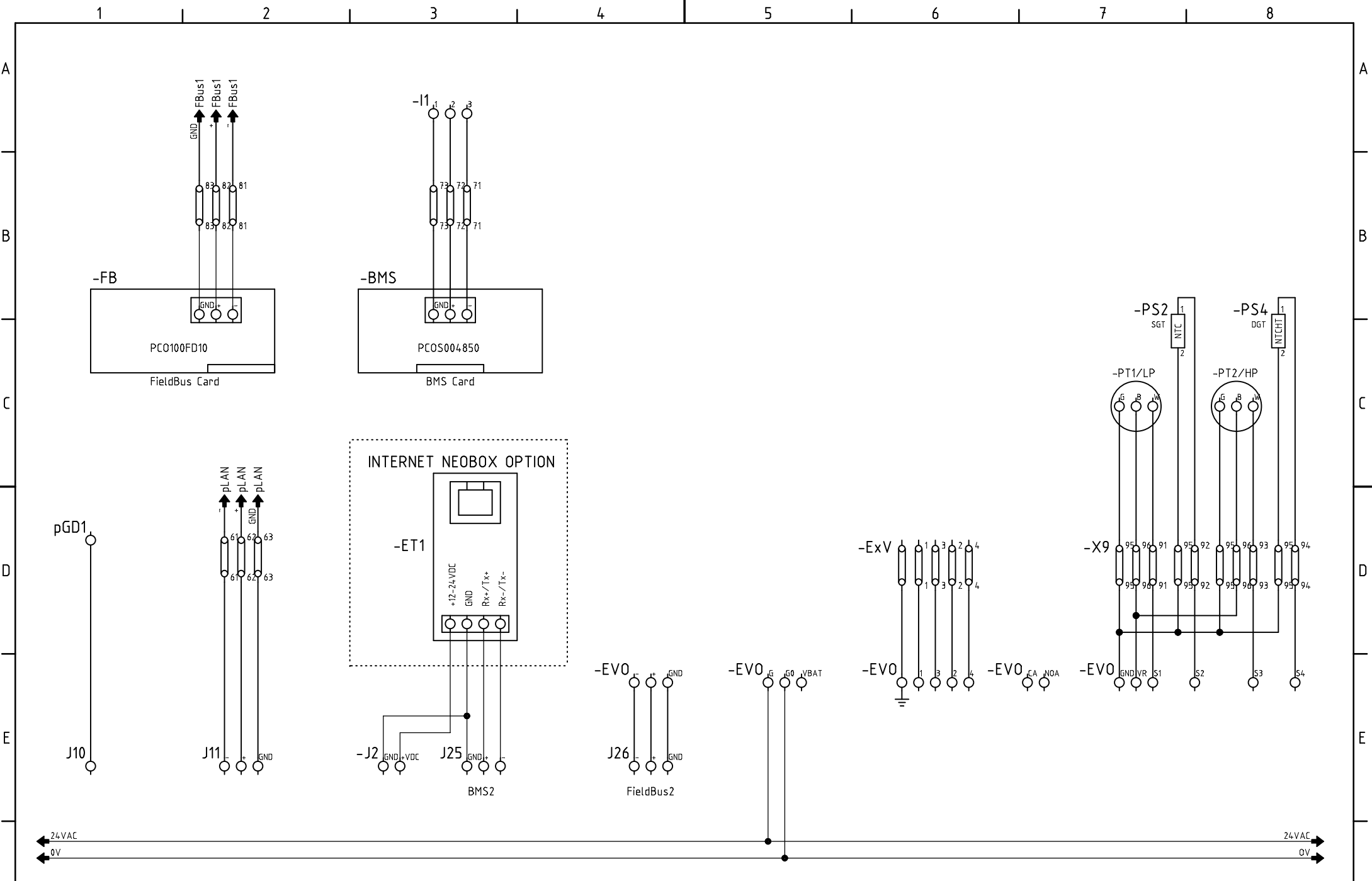
| PRODUCT INDEX | |
|---------------|--------------------|
| Drawn by | Ing. Jirka Jiranek |
| Date | 19052012 |
| Checked | |
| Date | |

TITLE
 BA22/30/451

| | | | |
|----------------------|----------|------------|------------|
| MASTER A | | | |
| Project | MASTER A | Print Date | 20.05.2012 |
| CUSTOMERS DRAWING No | | 4601 - | |
| Dwg No. | 4601/2 | Sheet | 1 of 00 |
| Rev | | | |



| | | | | | | | | | | | | |
|---|--|--|--|--|-------------------------|--|---|--|-----------------------|--|-----------------------|--------|
| | | | ATTENTION: THIS DOCUMENT CONTAINS PROPRIETARY DATA OF AUCOTEC. | | A3 Scale FULL | | PRODUCT INDEX Drawn by Ing. Jirka Jiránek Date 19052012 | | TITLE | | MASTER A | |
| NO DISCLOSURE, REPRODUCTION OR USE OF ANY PART OF THIS DOCUMENT MAY BE MADE WITHOUT WRITTEN PERMISSION. | | | | | | | BA22/30/45I | | Project micro1 | | Print Date 20.05.2012 | |
| ECN No. Date Name | | | | | | | | | Drg No. 4601/3 | | Sheet 2 of | Rev 00 |



ATTENTION: THIS DOCUMENT CONTAINS PROPRIETARY DATA OF AUCOTEC.
 NO DISCLOSURE, REPRODUCTION OR USE OF ANY PART OF THIS DOCUMENT MAY BE MADE WITHOUT WRITTEN PERMISSION.

| | |
|----------------------------|---------------|
| A4 Scale FULL | PRODUCT INDEX |
| | Drawn by |
| | Date 19052012 |
| | Checked |
| Date | |

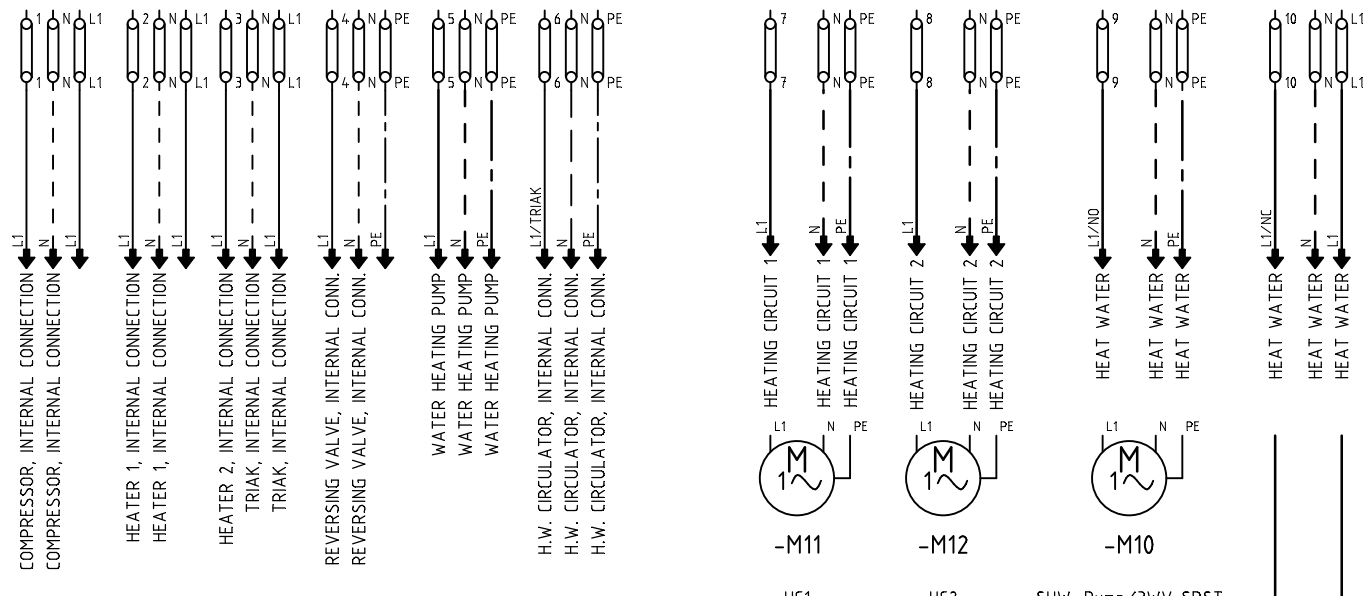
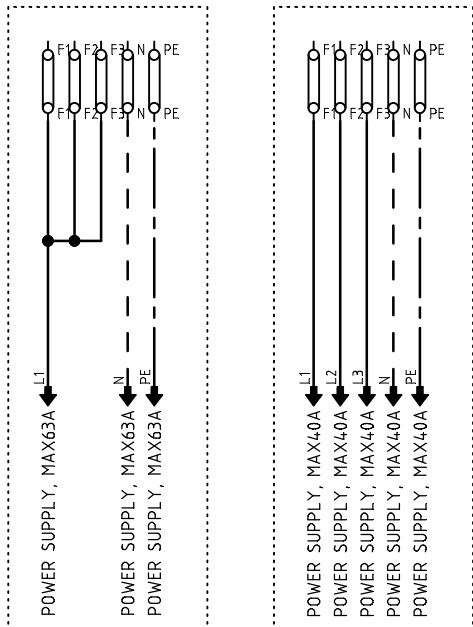
| | |
|-------|-------------|
| TITLE | BA22/30/45I |
|-------|-------------|

| | | | |
|---------|--------|------------|------------|
| Project | micro1 | Print Date | 20.05.2012 |
| 3 | | | |
| Dwg No. | 4601/4 | Sheet | 3 of 00 |
| | | Rev | 00 |

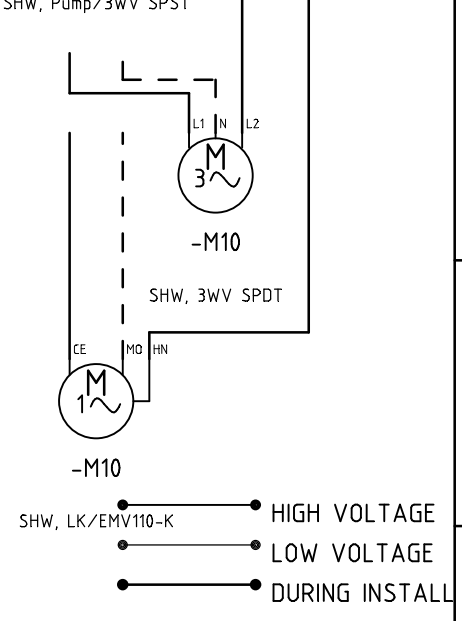
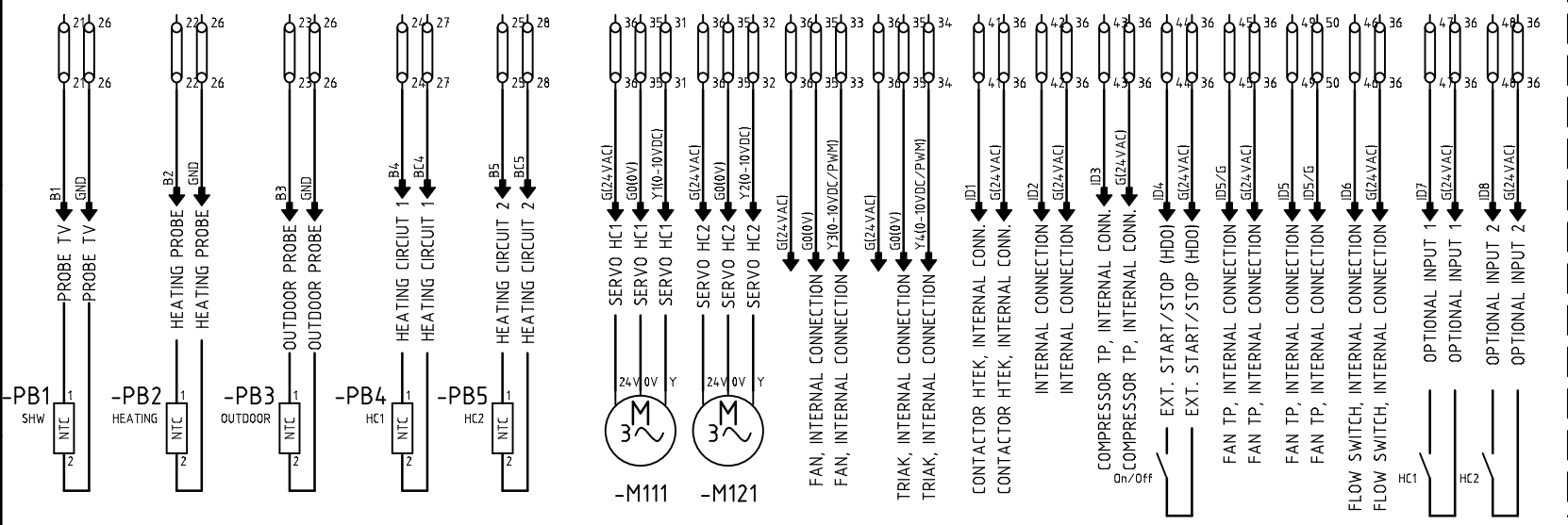
POWER SUPPLY

1x230V+N+PE

3x400V+N+PE



HIGH VOLTAGE
LOW VOLTAGE



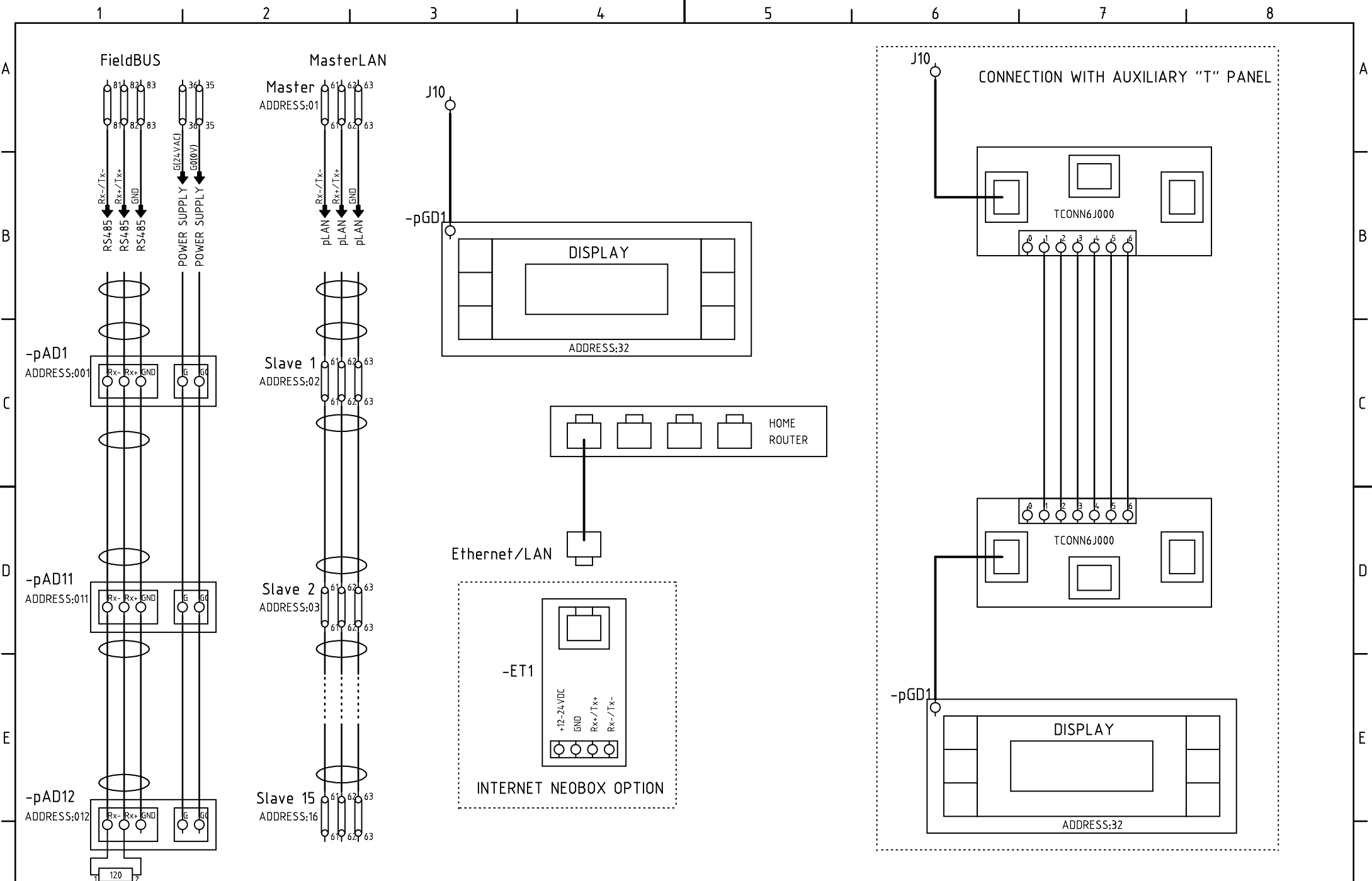
SHW, LK/EMV110-K HIGH VOLTAGE
 SHW, 3WV SPDT LOW VOLTAGE
 DURING INSTALL

ATTENTION: THIS DOCUMENT CONTAINS PROPRIETARY DATA OF AUCOTEC.
 NO DISCLOSURE, REPRODUCTION OR USE OF ANY PART OF THIS DOCUMENT MAY BE MADE WITHOUT WRITTEN PERMISSION.

| | |
|---------------------|-----------------------------|
| A4 Scale FULL | PRODUCT INDEX |
| | Drawn by Ing. Jirka Jiránek |
| | Date 19052012 |
| | Checked Date |

BOXAIR BA22/30/45I

| | | |
|----------------|-----------------------|--------|
| BOXAIR | | |
| Project BOXAIR | Print Date 20.05.2012 | |
| 2 | | |
| Drg No. 4601/5 | Sheet 2 of | Rev 00 |



| | | |
|---------|------|------|
| ECN No. | Date | Name |
| | | |
| | | |
| | | |

ATTENTION: THIS DOCUMENT CONTAINS PROPRIETARY DATA OF AUCOTEC.

NO DISCLOSURE, REPRODUCTION OR USE OF ANY PART OF THIS DOCUMENT MAY BE MADE WITHOUT WRITTEN PERMISSION.

| | |
|---------------------|------------------------------|
| A4 Scale FULL | PRODUCT INDEX |
| | Drawn by Ing. Jirka Jiraneck |
| | Date 19052012 |
| | Checked Ing. KAREL GUZEK |

| | |
|-------|--------------------|
| TITLE | BOXAIR BA22/30/45I |
|-------|--------------------|

| | | | |
|---------|--------|------------|------------|
| Project | BOXAIR | Print Date | 20.05.2012 |
| 3 | | | |
| Dwg No. | 4601/6 | Sheet | 3 of 00 |
| Rev | | | |